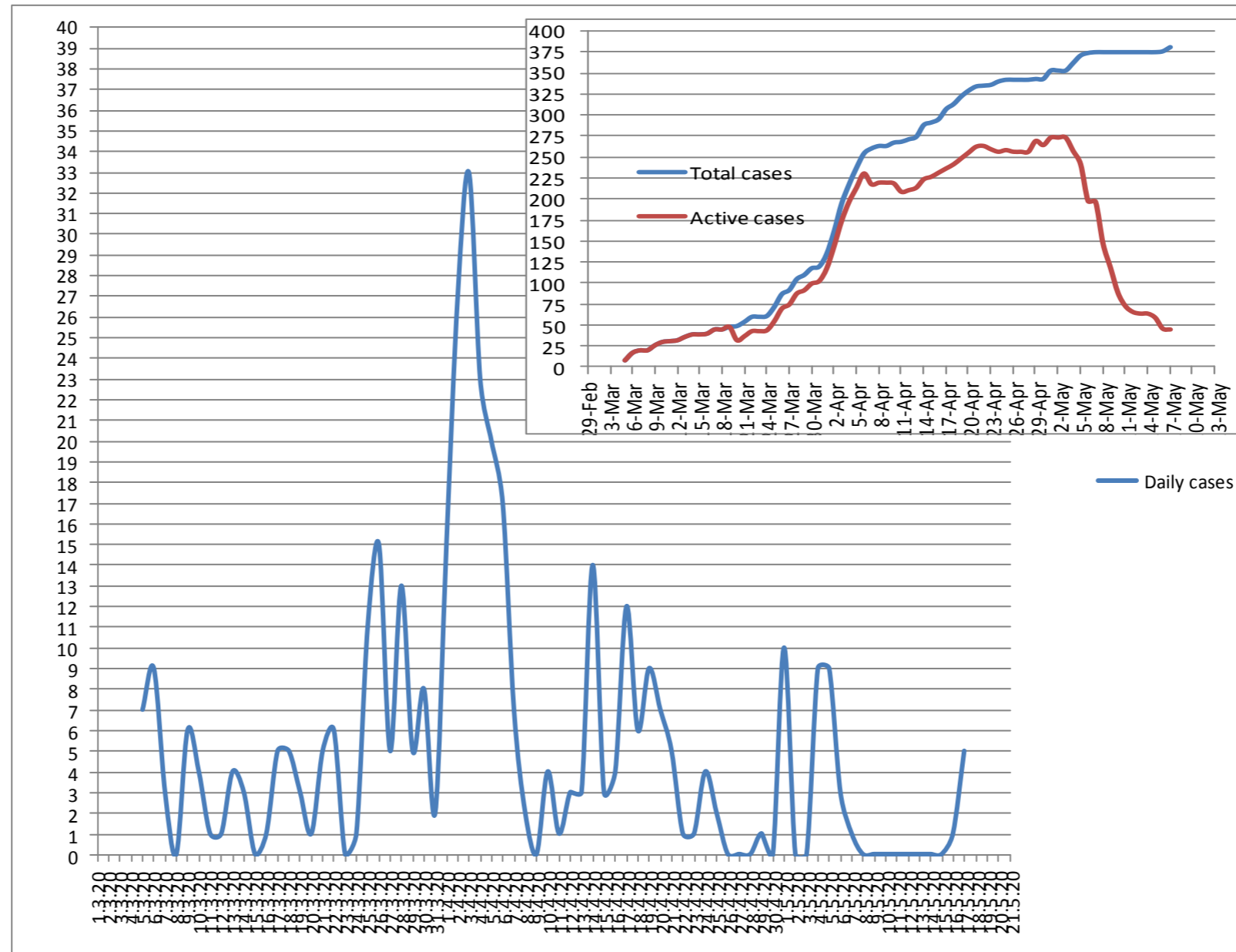


Update: Sunday 17/05/2020

Cases Statistics

شهر ٣	يومي	تراكمي	شهر ٤	يومي	تراكمي	شهر ٥	يومي	تراكمي
1	0	0	1	15	134	1	10	353
2	0	0	2	27	161	2	0	353
3	0	0	3	33	194	3	0	353
4	0	0	4	23	217	4	9	362
5	7	7	5	20	237	5	9	371
6	9	16	6	17	254	6	3	374
7	3	19	7	7	261	7	1	375
8	0	19	8	2	263	8	0	375
9	6	25	9	0	263	9	0	375
10	4	29	10	4	26	10	0	375
11	1	30	11	1	268	11	0	375
12	1	31	12	3	271	12	0	375
13	4	35	13	3	274	13	0	375
14	3	38	14	14	288	14	0	375
15	0	38	15	3	291	15	0	375
16	1	39	16	4	295	16	1	376
17	5	44	17	12	307	17	5	381
18	5	44	18	6	313	18		
19	3	47	19	9	322	19		
20	1	48	20	7	329	20		
21	5	53	21	5	334	21		
22	6	59	22	1	335	22		
23	0	59	23	1	336	23		
24	1	60	24	4	340	24		
25	11	71	25	2	342	25		
26	15	86	26	0	342	26		
27	5	91	27	0	342	27		
28	13	104	28	0	342	28		
29	5	109	29	1	343	29		
30	8	117	30	0	343	30		
31	2	119				31		

COVID - 19 Update in Palestine



Cases & deaths percentages for 1m population

Country	Tot. Case/1m pop	Deaths/1m pop
China	58	3
USA	4581	273
Italy	3728	528
Spain	5940	591
Germany	2109	96
France	2749	423
Israel	1922	31
Egypt	120	6
Jordan	60	0.9
Palestine	69	0.4

World:
 Tot. Cases /1m pop.: 612
 Deaths/1m pop: 40.4

Samples & Quarantine

Cumulative number of samples: 45211
 Home quarantine: 18971

Population Centers in Palestine

Total pop. Centers: 621
 Infected: 56
 Percentage: 9%

Cases according to governorate

Jenin	Bethlehem	Tolkarem
(%1.1) 4	(15.5 %) 59	(1.6 %) 6
Gaza strip	Jericho	Tonbas
(%5.2) 20	(0.3 %) 1	0
Hebron	Ramallah	Jerusalem
(17.3 %) 66	(%20.2) 77	(36.7%) 140
Salfeet	Qalqilya	Nablus
(0.3 %) 1	0	(%1.8)7

Cases according to classification

Travelers	Contact with workers	Workers
(6.3%)24	(46.2%) 176	(29.4%)112
Prisoners	Contact with tourists	Contact with travelers
(% 0.3%)1	(10.5 %)40	(%3.1)12
other	Contact with Med. staff	Medical staff
(% 0.5%)2	(% 1.3%)5	(% 2.4)9

Confirmed Cases

	West bank & Gaza strip	Jerusalem Inside the wall	Total
All cases	381	179	560
Active	44	59	103
Recovered	335	118	453
Deaths	2	2	4



Palestinian communities outside Palestine